

SOLDERING IRON

**READ ALL INSTRUCTIONS BEFORE USE.
SAVE THESE INSTRUCTIONS.**

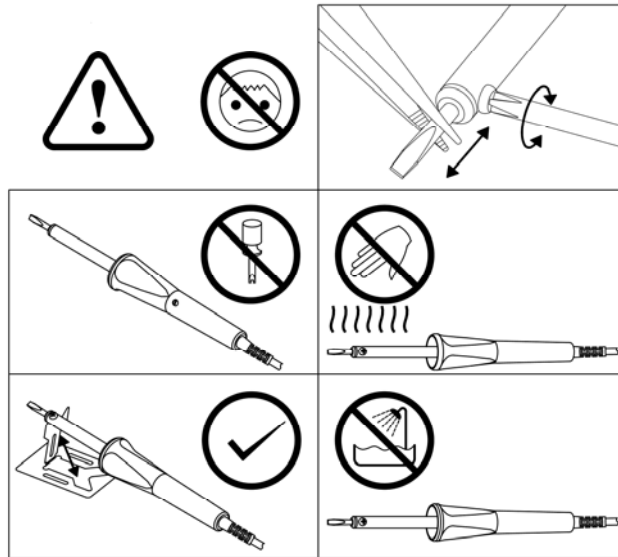
Important Safety Precautions

1. **CAUTION** -The tool reaches high temperature! May cause burn.
2. **WARNING:** This tool must be placed on its stand when not in use.
3. Do not touch hot tip or hot metal parts when in use.
4. Turn off the tool and use pliers when interchanging tips.
5. Tips may contain sharp or pointy edges. Use with care.
6. Keep out of reach of children. This is not a toy and not intended for use by children 12 years old or younger without adult supervision.
7. Misuse may cause burns, electric shock and injuries.
8. Do not immerse tool in water or other liquid! Danger of electric shock!
9. Always use the tool on a heatproof and uncluttered table.
10. After finished using the tool, let the tool cool naturally on safety stand in a safe place, out of reach of children, before storing away.
11. Users should always rest a hot tool on the stand to prevent risk of fire. If not, the hot tip may burn objects that come in contact (including power cord) which may result in fire hazard.
12. If the cord is damaged, do not use. Cord must be replaced by the manufacturer or its service agent or a similarly qualified person in order to avoid a hazard.
13. This appliance can be used by children from 8 years and above and persons with reduced physical, sensory or mental capabilities, or lack of experience and knowledge, if they have been given supervision or instruction concerning use of the appliance in a safe way and understand the hazards involved.
14. Children should be supervised to ensure that they do not play with the appliance.
15. For domestic use only. Use only for the intended purposes.

Operating Instructions

1. Check that the voltage on the tool is same as source of current.
2. Make sure tip is in fixed position and screw is tightened.
3. Connect the tool to mains current.
4. Place the tool on the safety stand and wait for the tool to heat to working temperature in approximately 3-5minutes.
5. Surfaces of the connection points must be clean.
6. "Tin" the tip by covering the heated tip with rosin core solder.
7. Use the tool to heat the connection points, not the solder.
8. Apply only enough solder to the heated parts.
9. Allow the joint to cool undisturbed.
10. Clean the tip with a wet sponge while the tip is still heated.
11. Unplug the tool and let the tool cool down naturally on safety stand in a safe place, out of reach of children.

SOLDERING IRON



Disposal

This symbol indicates that the appliance shall not be disposed of with household waste, but in disposal containers provided for that purpose. Check with your local city council for recycling facilities for electrical and electronic equipment in your area.